



## Iconic Kimberley

Darwin to Broome / | Le Laperouse | 11days / 10nights | From AUD11,150pp  
 Broome to Darwin

Australia's Kimberley region is one of the world's most spectacular and pristine wilderness areas. The best bit? It's practically located in your backyard!

### Why cruise with Ponant?

- All-inclusive cruises – expeditions ashore, all meals, drinks, wifi
- More than 20 years cruising the world
- Travel aboard the most ecological & modern fleet in the world
- Naturalist experts inform & guide using Zodiacs and on shore expeditions
- Attentive service & fabulous cuisine from your French crew

### Welcome to the world of Ponant

Discover the treasures of the land by sea on board luxurious yachts that are built on an intimate scale for discerning travellers. With a French crew, attentive service and focus on gastronomy, this is expedition cruising at its authentic and sophisticated best.

### Dates

Iconic Kimberley cruise is a duration of 11 days (10 nights)

| <b>Darwin to Broome</b> | <b>Broome to Darwin</b> |
|-------------------------|-------------------------|
| <b>Departure Date</b>   | <b>Departure Date</b>   |
| 23 May 2019             | 2 Jun 2019              |
| 12 Jun 2019             | n/a                     |
| 2 Jul 2019              | 12 Jul 2019             |
| 22 Jul 2019             | 1 Aug 2019              |
| 11 Aug 2019             | 21 Aug 2019             |
| 8 May 2020              | 18 May 2020             |
| n/a                     | 7 Jun 2020              |
| 17 Jun 2020             | n/a                     |
| 7 Jul 2020              | 17 Jul 2020             |
| 27 Jul 2020             | 6 Aug 2020              |
| 16 Aug 2020             | n/a                     |

## Itinerary

### Highlights

- Witness unique tidal phenomena such as the Horizontal Falls
- Discover billions of years-old landscapes & ancient rock art
- Listen to stories of the dreamtime from the oldest continuous culture on the planet
- Explore pristine mangrove environments, home to the world's largest living reptile
- In Wyndham, enjoy one of the 3 complimentary excursions (subject to availability, on a first come first served basis in chronological order of booking, please contact us):
  - Ord River experience including a riverside camp lunch
  - Bungle Bungle scenic flight: panoramic flight onboard a Cessna airplane from Kununurra to the Bungle Bungle massif
  - El Questro experience includes Emma Gorge and Zebedee Thermal Springs. Take a mid-day break for lunch and end the full day with the Chamberlain River Cruise
- Highly qualified local expedition team
- Enjoy regular Zodiac® outings & shore visits to get close to Kimberley nature

### Description

Set sail for the wild and grandiose landscapes of Kimberley. From Darwin to Broome Le Lapérouse treats you to an 11-day expedition cruise to one of the last unspoiled regions on the planet. See wild mangrove forests where saltwater crocodiles live along with many species of birds. Witness the awe-inspiring King George River and the majestic Twin Falls, the highest falls in Western Australia. Admire the Montgomery Reef, home to vast expanses of lagoons and immense coral reefs. Le Lapérouse will take you along one of the most spectacular coasts in the entire region. With their falls, abrupt gorges, savannah, calm waters and desolate mountain chains, the wild lands of Kimberley await you.

### Details

Day 1: Darwin

Day 2: Pulau Meatimiarang (technical stop, Indonesia) – a wonderful day at sea to get to know your ship and make the most of its facilities

Day 3: Wyndham

Day 4: King George River

Day 5: Vansittart Bay

Day 6: Swift Bay

Day 7: Hunter River & Mitchell Falls

Days 8 & 9: Collier Bay

Day 10: Lacepede Islands

Day 11: Broome

*Please note: itinerary subject to the extreme tidal conditions of the Kimberley. The expedition highlights and itineraries described above illustrate possible experiences only and cannot be guaranteed.*

### **Inclusions**

- Top quality meals during the voyage
- Open bar – house wine, champagne, beer & non-alcoholic options
- Taxes & Transfers (airport-port) in Broome & Darwin
- Activities/shore excursions as specified
- Lectures and presentations by expedition leaders & naturalist staff

## Map





## Your cruise ship – Le Laperouse

Ponant ships embody the subtle alliance between luxury, intimacy and wellbeing. Featuring innovative and environmentally friendly equipment, elegantly designed staterooms, spacious suites with large windows, and lounge areas that open onto the outside, this new limited-capacity yacht boasting just 92 staterooms and suites will offer you a truly unique cruising experience.

### The ship features:

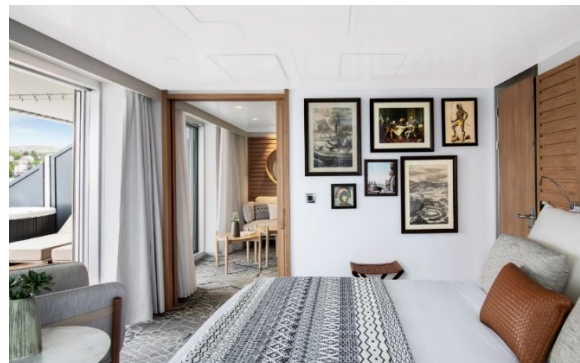
- Restaurants x 2
- Blue Eye Lounge (multi-sensory underwater lounge) and Main Lounge
- Hydraulic Platform
- Theatre
- Pool with Panoramic Views, Outdoor Bar and Lounge

| Cabins             | Area                                | Price From* |
|--------------------|-------------------------------------|-------------|
| Deluxe Stateroom   | 19m <sup>2</sup> + 4m <sup>2</sup>  | \$11,150    |
| Prestige Stateroom | 19m <sup>2</sup> + 4m <sup>2</sup>  | \$12,480    |
| Deluxe Suite       | 27m <sup>2</sup> + 6m <sup>2</sup>  | \$19,140    |
| Prestige Suite     | 32m <sup>2</sup> + 8m <sup>2</sup>  | \$25,980    |
| Privilege Suite    | 38m <sup>2</sup> + 8m <sup>2</sup>  | \$28,620    |
| Grand Deluxe Suite | 45m <sup>2</sup> + 30m <sup>2</sup> | \$31,470    |
| Owners Suite       | 45m <sup>2</sup> + 30m <sup>2</sup> | \$36,620    |

*\*prices are AUD per person, twin share, and are subject to change and availability.*

### All cabins include:

- Individually-controlled air-conditioning
- King-size bed or twin beds and Shower
- Flat screen satellite TV, DVD, CD and iPod players and Video on demand
- Desk with stationery, Minibar, Safe Hairdryer, Bath robes, Satellite direct line telephone, 110/220 volts outlet
- French bath products
- 24hr room service, Internet Access WIFI



*\* Images are provided by Ponant. The interior images are the La Laperouse ship and the cabin is the Owners Suite.*

## Other things you need to know

Expedition programs include activities such as Zodiac outings and landings (sometimes with "wet landings"), moderate walks to more active hikes, all accompanied by your expedition team of naturalist guides.

Ports of call, visited sites, outings and landings will depend on weather conditions, extreme tidal conditions, winds and the state of the sea. These can force a change of plans at any time. The Captain and the Expedition Leader may at any time cancel or stop any activity, or even modify the itinerary. The final itinerary will be confirmed by the Captain, who will take into account the touristic quality of the sites and above all, the safety of the passengers. His/her decision will be based on advice from experts and authorities.

Travelling to polar/isolated regions is an exhilarating experience in remote areas. Please remember that you are far from modern hospitals with full medical facilities, thus evacuation is extremely expensive. Without adequate travel insurance coverage, all expenses will have to be immediately paid with your personal funds. We urge you to subscribe to full coverage insurance, choose your insurance company very carefully, be extremely vigilant and ensure your travel insurance is fully comprehensive, especially if you are insured by your credit card.

### Clothing tips:

- Cotton shorts or light weight long trousers
- Long-sleeved breathable SPF50+ shirts
- Cotton short sleeved T-shirt
- Aquatic UV long-sleeved T-shirt for sun protection during snorkelling or swimming
- Aquatic non-slip sandals
- Windproof, waterproof and breathable outer layer
- Broad brimmed anti-UV hat with strap and veil to protect the neck
- Comfortable walking shoes

### Accessories:

- Highly protective sunglasses
- Sunscreen and after-sun with high SPF index & insect repellent
- Binoculars (strongly recommended for wildlife viewing)
- Small waterproof backpack (to protect your camera from water)
- Camelbak (backpack with water pockets)
- Walking poles (highly recommended)



**Forth & Wonder**

p: +61 9045 9819

e: [curious@forthandwonder.com.au](mailto:curious@forthandwonder.com.au)

Suite 106,  
672 Glenferrie Road,  
Hawthorn, Melbourne VIC 3122



@forthandwonder #forthandwonder

[www.forthandwonder.com.au](http://www.forthandwonder.com.au)